



**SPLIT TYPE
AIR CONDITIONER**

CASSETTE type (50Hz)

SERVICE MANUAL

Models	Indoor unit	Outdoor unit
	AUG30FUAR	AOG30FNBWL
	AUG30UUAR	AOG30UNBWL



C O N T E N T S

SPECIFICATIONS	1
DIMENSIONS	2
REFRIGERANT SYSTEM DIAGRAM	4
CIRCUIT DIAGRAM	5
ERROR CONTENTS	7
INDOOR PRINTED CIRCUIT BOARD CIRCUIT DIAGRAM	8
OUTDOOR PRINTED CIRCUIT BOARD CIRCUIT DIAGRAM ..	10
DISASSEMBLY ILLUSTRATION	11
PARTS LIST	20
STANDARD ACCESSORIES	22

S P E C I F I C A T I O N S

TYPE		COOLING	COOLING & HEATING
INDOOR UNIT		AUG30FUAR	AUG30UJAR
OUTDOOR UNIT		AOG30FNBWL	AOG30UNBWL
COOLING CAPACITY	(kW)	8.40	8.40
HEATING CAPACITY	(kW)	—	9.50

ELECTRICAL DATA

POWER SOURCE	(V)	230		
FREQUENCY	(Hz)	50		
RUNNING CURRENT	(A)	COOLING	13.6	13.6
		HEATING	—	13.1
INPUT WATTS	(kW)	COOLING	2.95	2.95
		HEATING	—	2.78
E.E.R.	(kW/kW)	COOLING	2.85	2.85
		HEATING	—	3.42
STARTING CURRENT	(A)	70		
MOISTURE REMOVAL	(ℓ/hr)	3.0		

COMPRESSOR

TYPE	Hermetic type, 2 poles, Single phase, Induction motor, Rotary		
DISCRIMINATION	5JS330DAE01		
REFRIGERANT	R410A	(g)	2,300

FAN SPEED	(r.p.m.)	INDOOR	HIGH	560	C 560 H 540
			MED	480	C 480 H 480
			LOW	390	C 390 H 390
			S-LOW	250	C 250 H 250
		OUTDOOR HI / LO		780 / 400	
AIR FLOW	(m³/h)	INDOOR	1,250		
		OUTDOOR	3,300		
DIMENSIONS	H x W x D	(mm)	INDOOR	246 x 830 x 830	
			GRILLE	35 x 940 x 940	
			OUTDOOR	830 x 900 x 330	
WEIGHT	NET / GROSS	(kg)	INDOOR	34 / 44	
			OUTDOOR	68 / 74	69 / 75
MAX PIPE LENGTH / HEIGHT			(m)	30 / 15	
REMOTE CONTROLLER TYPE			WIRED		

ADDITIONAL REFRIGERANT CHARGE (R410A)

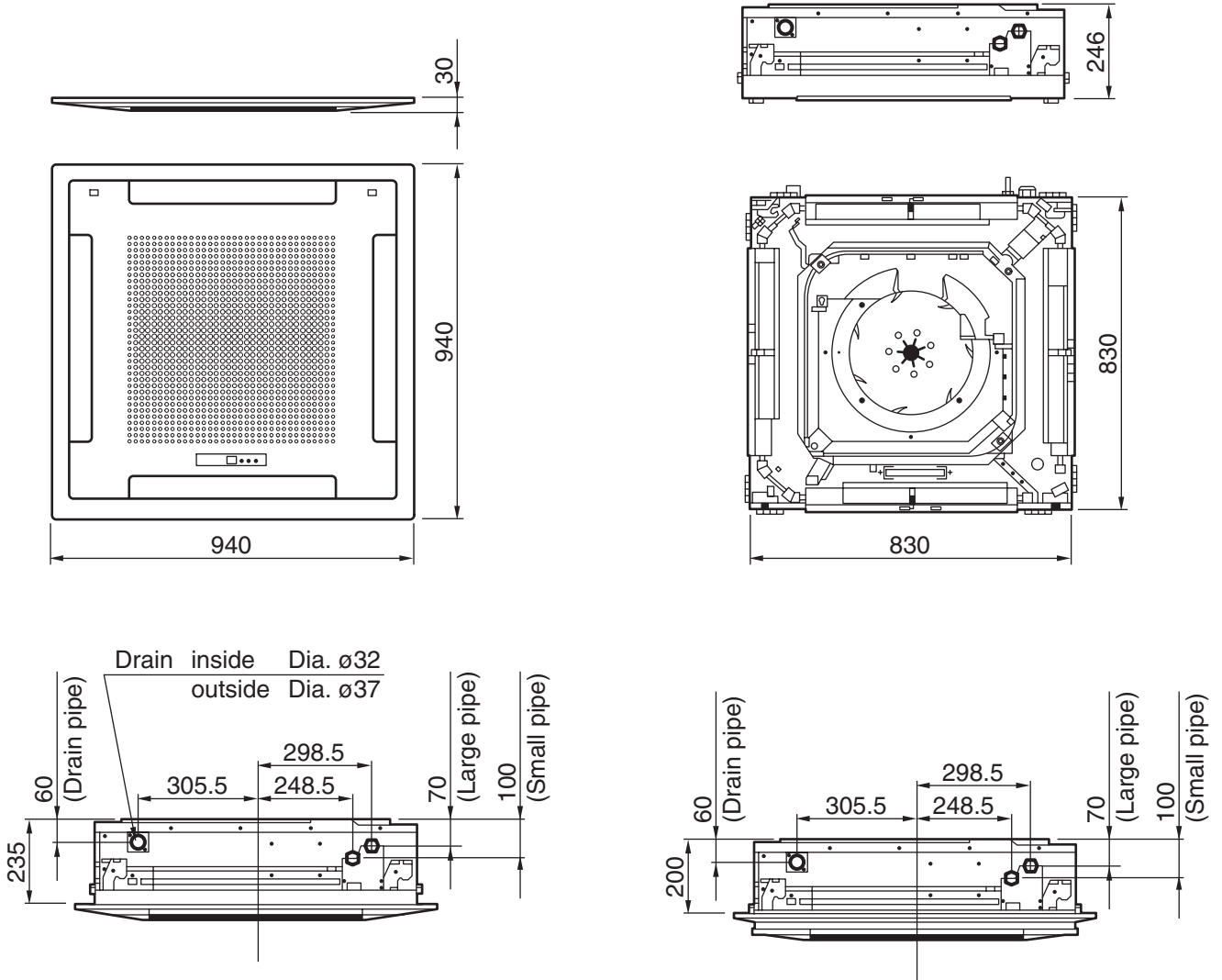
FULL CHARGE AMOUNT	PIPE LENGTH	7.5 m	2,300 g	2,300 g
		10 m	2,350 g	2,400 g
		20 m	2,550 g	2,800 g
		30 m	2,750 g	3,200 g
ADDITIONAL CHARGE			20 g / m	40 g / m

DIMENSIONS

INDOOR UNIT

(Unit : mm)

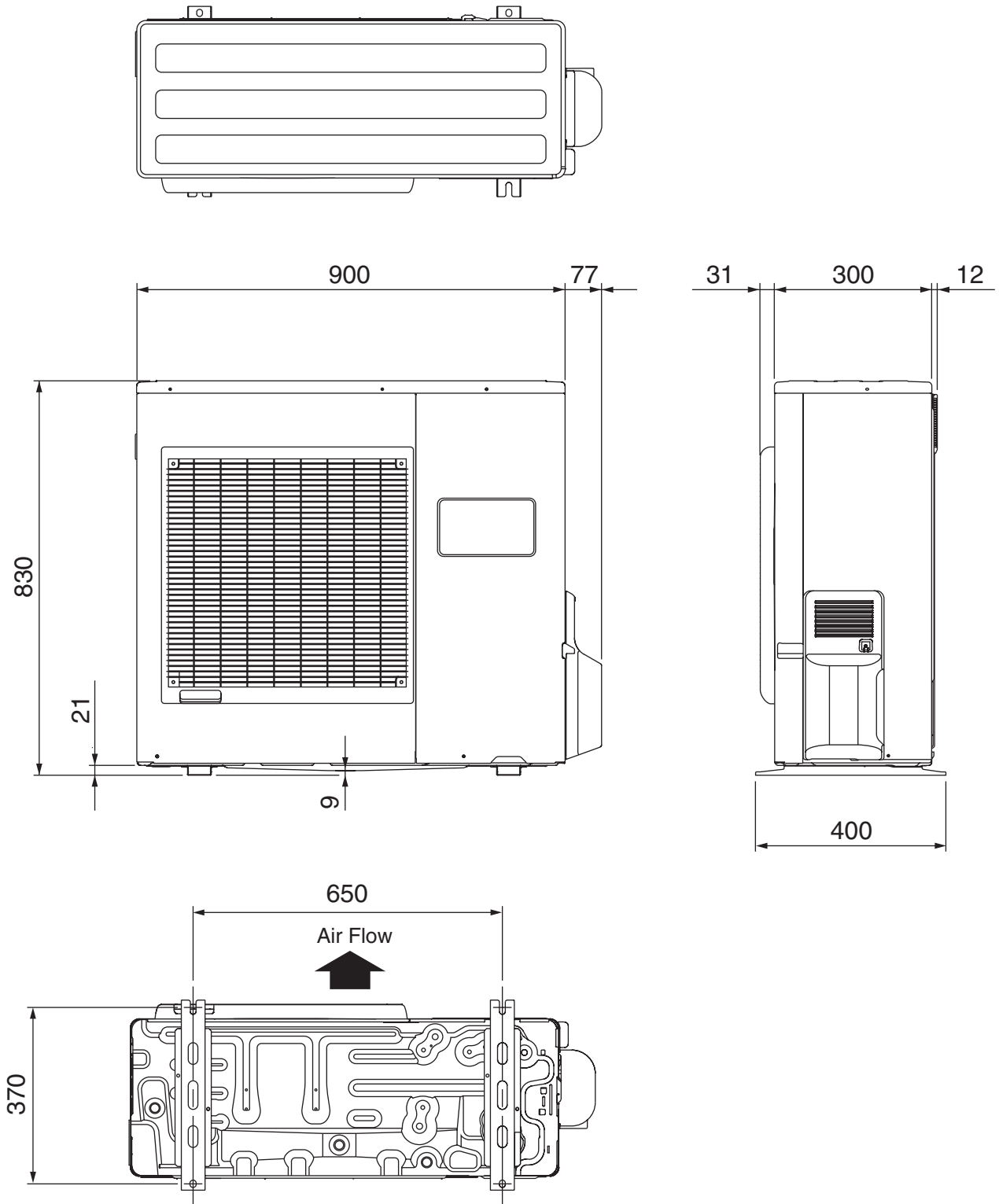
Models : AUG30FUAR
AUG30UUAR



OUTDOOR UNIT

(Unit : mm)

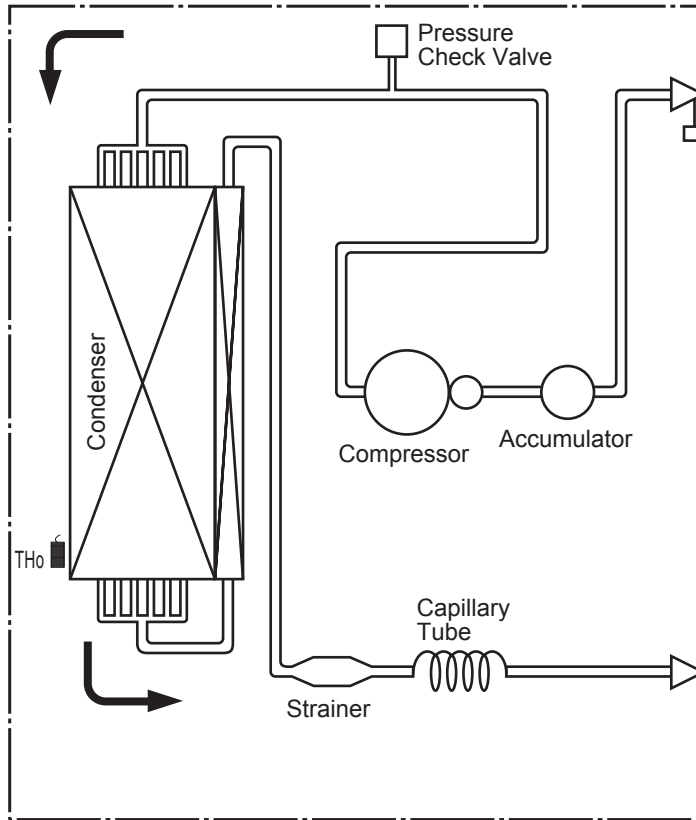
**Models : AOG30FNBWL
AOG30UNBWL**



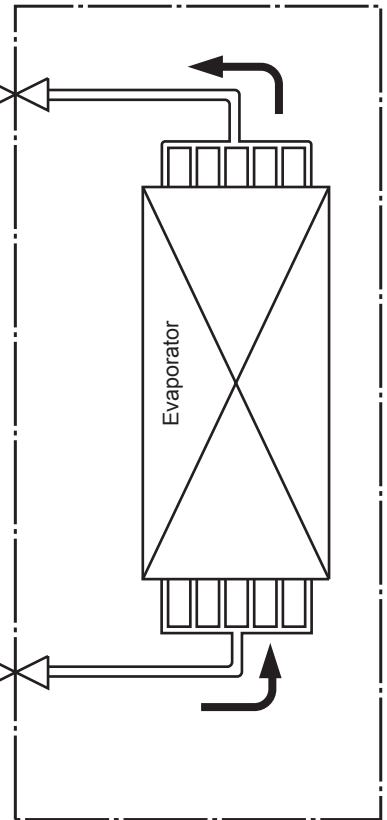
REFRIGERANT SYSTEM DIAGRAM

Models : AUG30FUAR / AOG30FNBWL

OUTDOOR UNIT

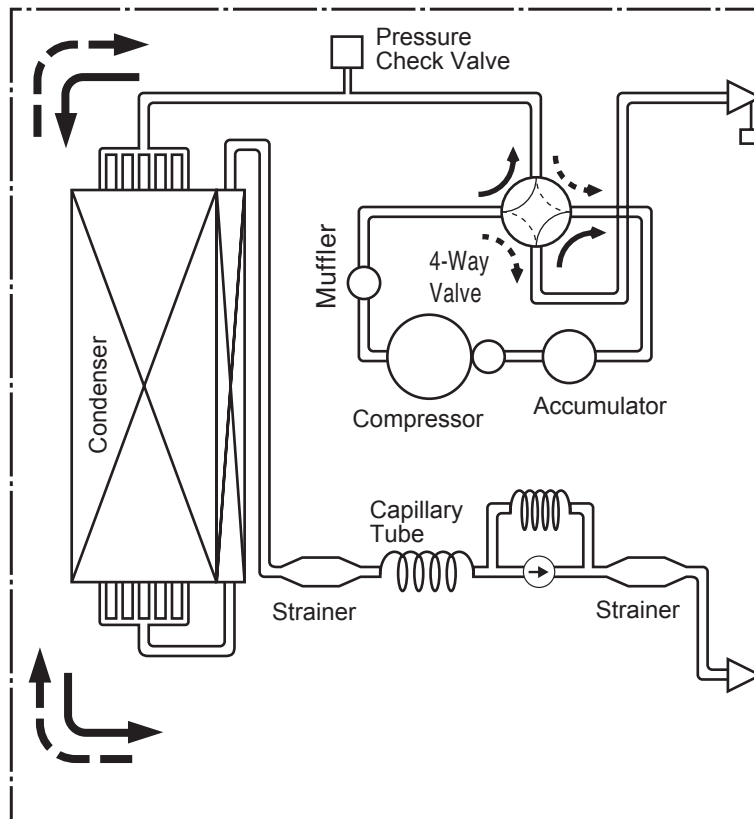


INDOOR UNIT

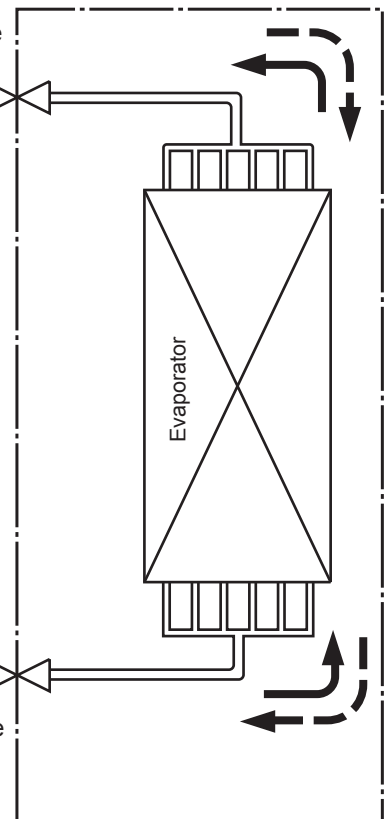


Models : AUG30UUAR / AOG30UNBWL

OUTDOOR UNIT



INDOOR UNIT

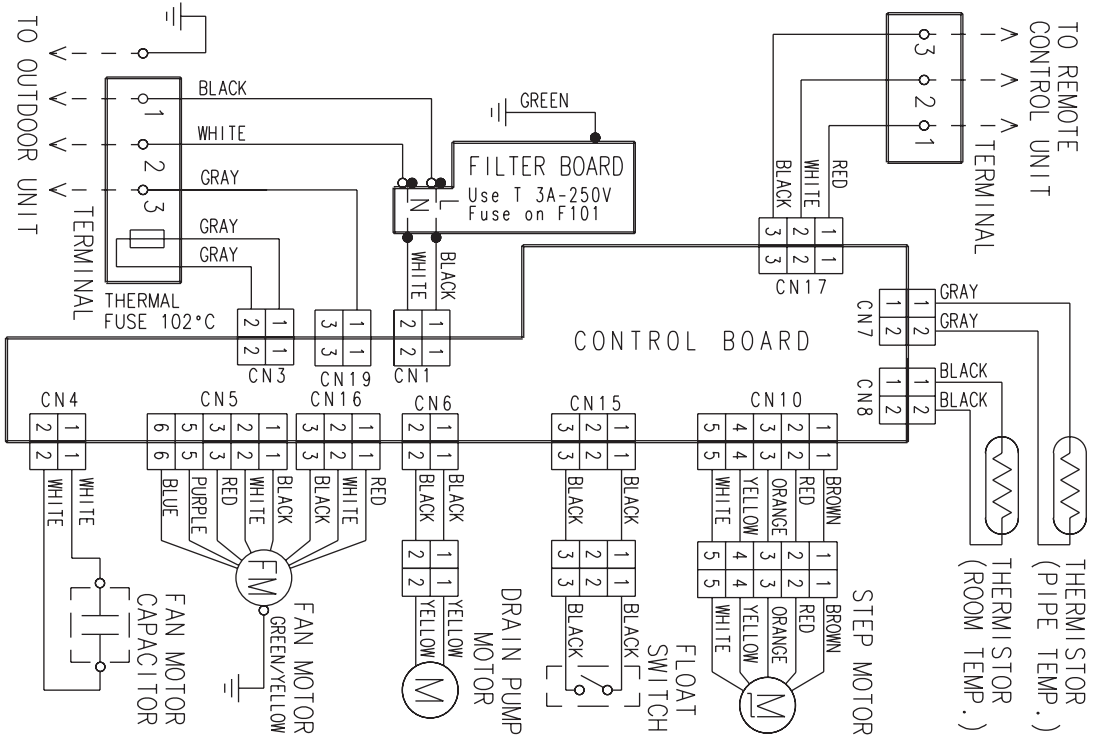


→ : Cool
 - - - → : Heat

CIRCUIT DIAGRAM

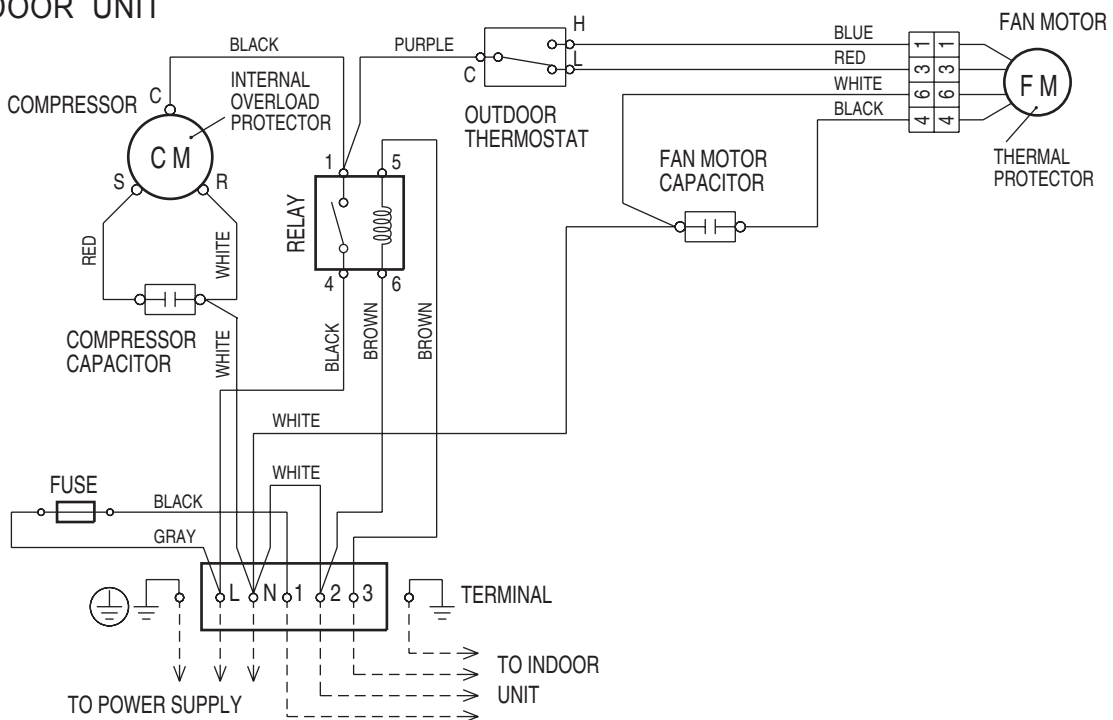
Model : AUG30FUAR

INDOOR UNIT



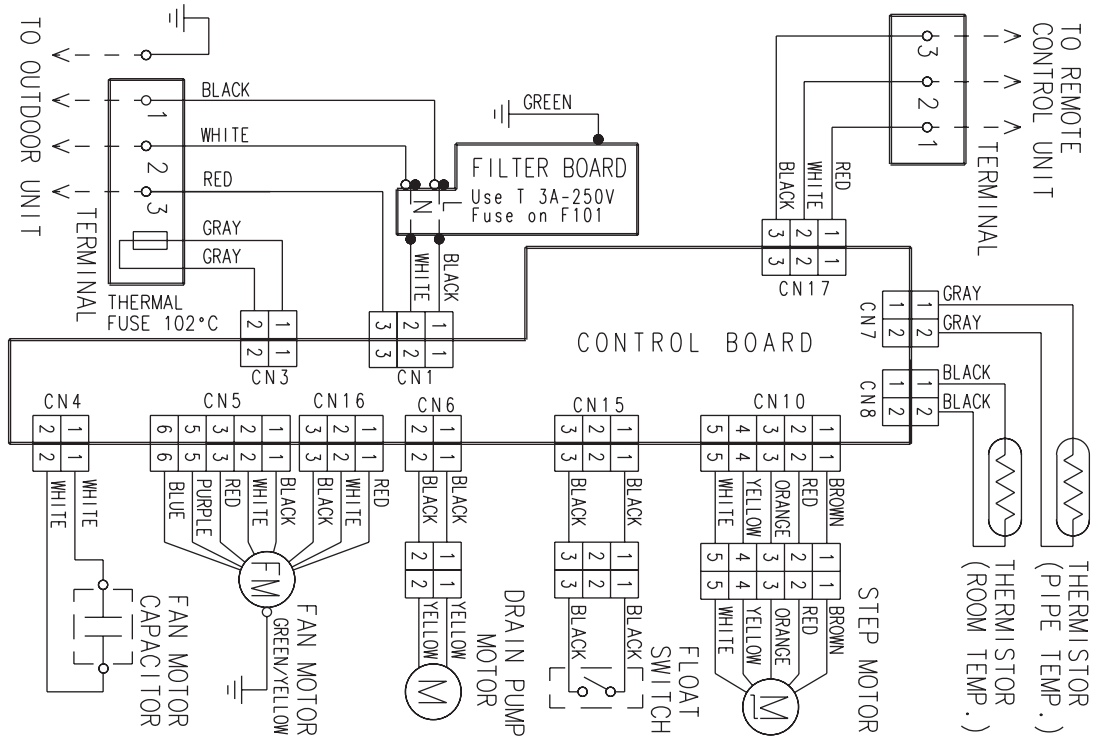
Model : AOG30FNBL

OUTDOOR UNIT



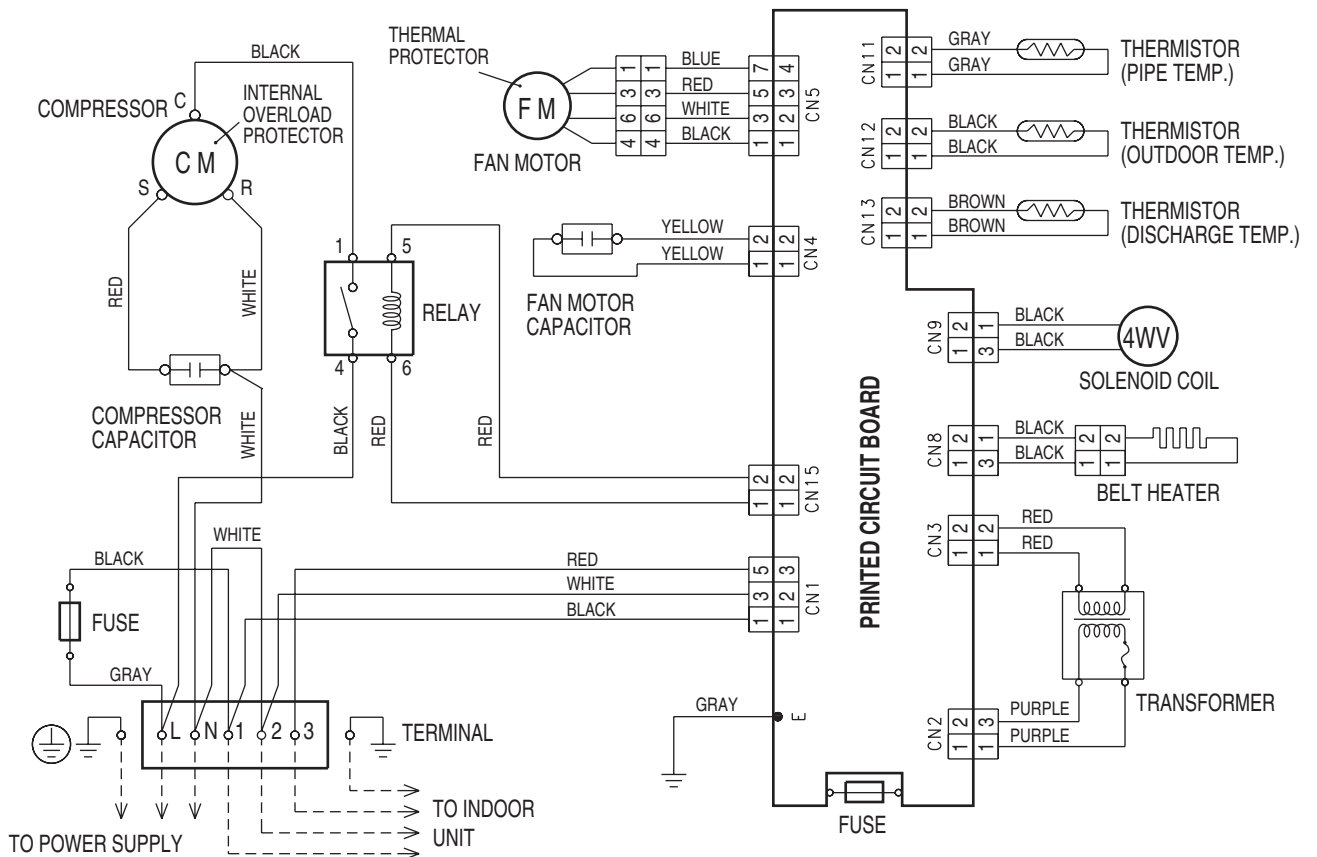
Model : AUG30UUA R

INDOOR UNIT



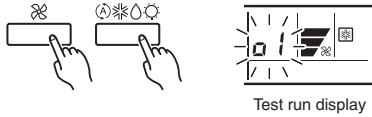
Model : AOG30UNBWL

OUTDOOR UNIT



ERROR CONTENTS

- Stop the air conditioner operation.
- Press the master control button and the fan control button simultaneously for 2 seconds or more to start the test run.



- Press the start/stop button to stop the test run.

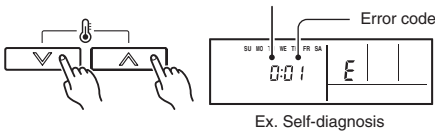
[SELF-DIAGNOSIS]

When the error indication E:EE is displayed, follow the following items to perform the self-diagnosis. E:EE indicates an error has occurred.

1. REMOTE CONTROLLER DISPLAY

- Stop the air conditioner operation.
- Press the set temperature buttons Δ / ∇ simultaneously for 5 seconds or more to start the self-diagnosis. Refer to the following tables for the description of each error code.

Unit number (usually 0)



Ex. Self-diagnosis

- Press the set temperature buttons Δ / ∇ simultaneously for 5 seconds or more to stop the self-diagnosis.

Error code	Error contents
00	Communication error (indoor unit \leftrightarrow remote controller)
01	Communication error (indoor unit \leftrightarrow outdoor unit)
02	Room temperature sensor open
03	Room temperature sensor short-circuited
04	Indoor heat exchanger temperature sensor open
05	Indoor heat exchanger temperature sensor short-circuited
06	Outdoor heat exchanger temperature sensor open
07	Outdoor heat exchanger temperature sensor short-circuited
08	Power source connection error
09	Float switch operated
0A	Outdoor temperature sensor open
0b	Outdoor temperature sensor short-circuited
0c	Discharge pipe temperature sensor open
0d	Discharge pipe temperature sensor short-circuited
0E	Outdoor high pressure abnormal
0F	Discharge pipe temperature abnormal
11	Model abnormal
12	Indoor fan abnormal
13	Outdoor signal abnormal
14	Outdoor EEPROM abnormal

2. OUTDOOR UNIT LEDS

When the outdoor temperature drops, the outdoor units fans may switch to low speed.

ERROR : HEAT & COOL MODEL (REVERSE CYCLE) ONLY

The LED lamps operate as follows according to the error contents.

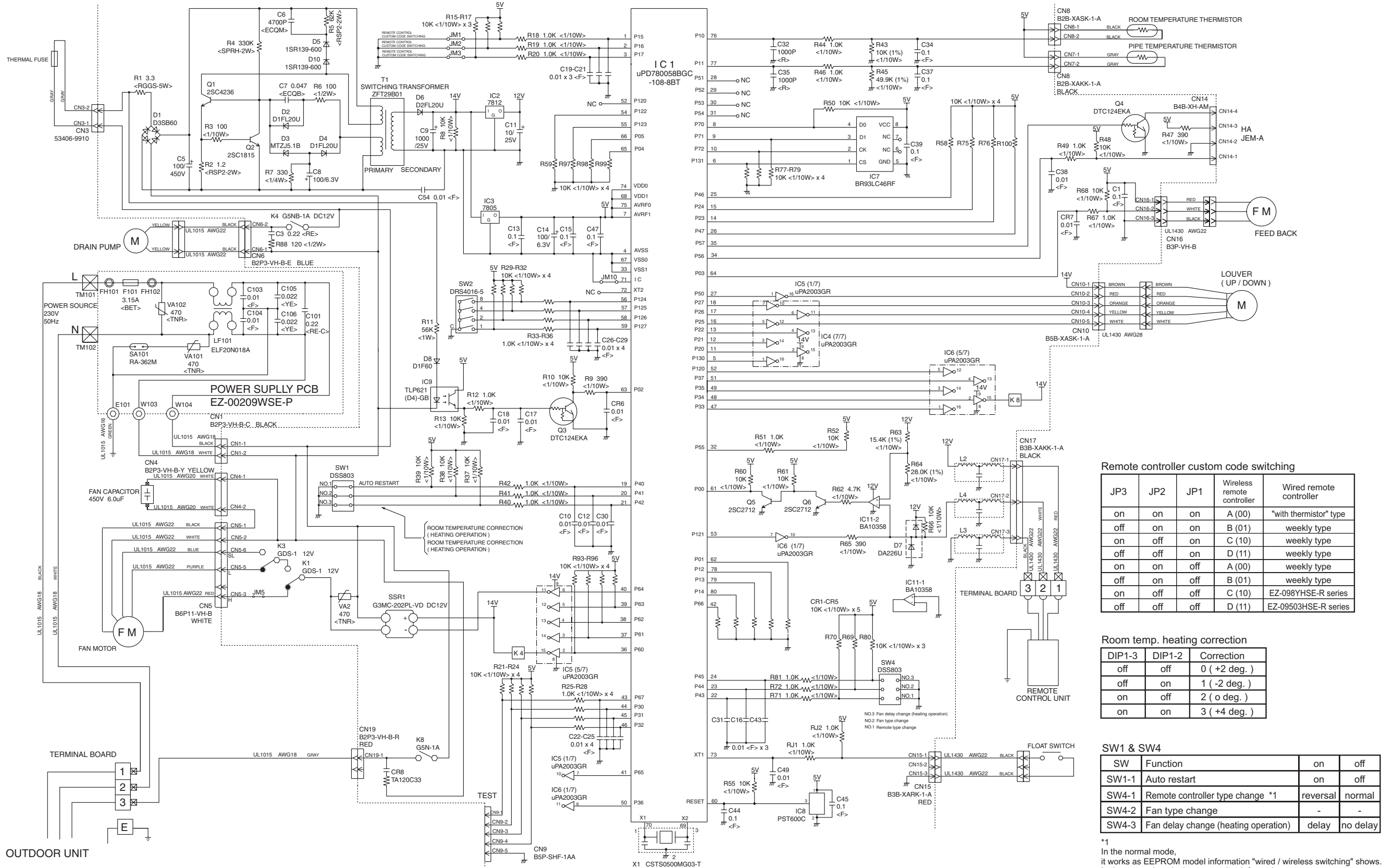
Error display		Error contents
LED1	LED2	
<p>Quick flash continued</p>	<p>Quick flash continued</p>	Model abnormal or EEPROM abnormal
<p>1 quick flash repeated</p>	<p>Lighting continued</p>	Power source connection error
<p>2 quick flash repeated</p>	<p>Lighting continued</p>	Discharge temperature sensor error
<p>3 quick flash repeated</p>	<p>Lighting continued</p>	Outdoor heat exchanger temperature sensor error
<p>4 quick flash repeated</p>	<p>Lighting continued</p>	Outdoor temperature sensor error
<p>5 quick flash repeated</p>	<p>Lighting continued</p>	Communication signal error
<p>6 quick flash repeated</p>	<p>Lighting continued</p>	Indoor unit error
<p>7 quick flash repeated</p>	<p>Lighting continued</p>	Discharge temperature abnormal
<p>8 quick flash repeated</p>	<p>Lighting continued</p>	High pressure abnormal

When the fault is cleared, the LED lamp goes off. However, for discharge pipe temperature abnormal and high pressure abnormal, the LED lamp lights continuously for 24 hours, as long as the power is not turned off.

INDOOR PRINTED CIRCUIT BOARD CIRCUIT DIAGRAM

Model : AUG30FUAR

CONTROLLER PCB ASSEMBLY (MAIN PCB)
K01AL-040LWSE-C



Remote controller custom code switching

JP3	JP2	JP1	Wireless remote controller	Wired remote controller
on	on	on	A (00)	"with thermistor" type
off	on	on	B (01)	weekly type
on	off	on	C (10)	weekly type
off	off	on	D (11)	weekly type
on	on	off	A (00)	weekly type
off	on	off	B (01)	weekly type
on	off	off	C (10)	EZ-098YHSE-R series
off	off	off	D (11)	EZ-09503HSE-R series

Room temp. heating correction

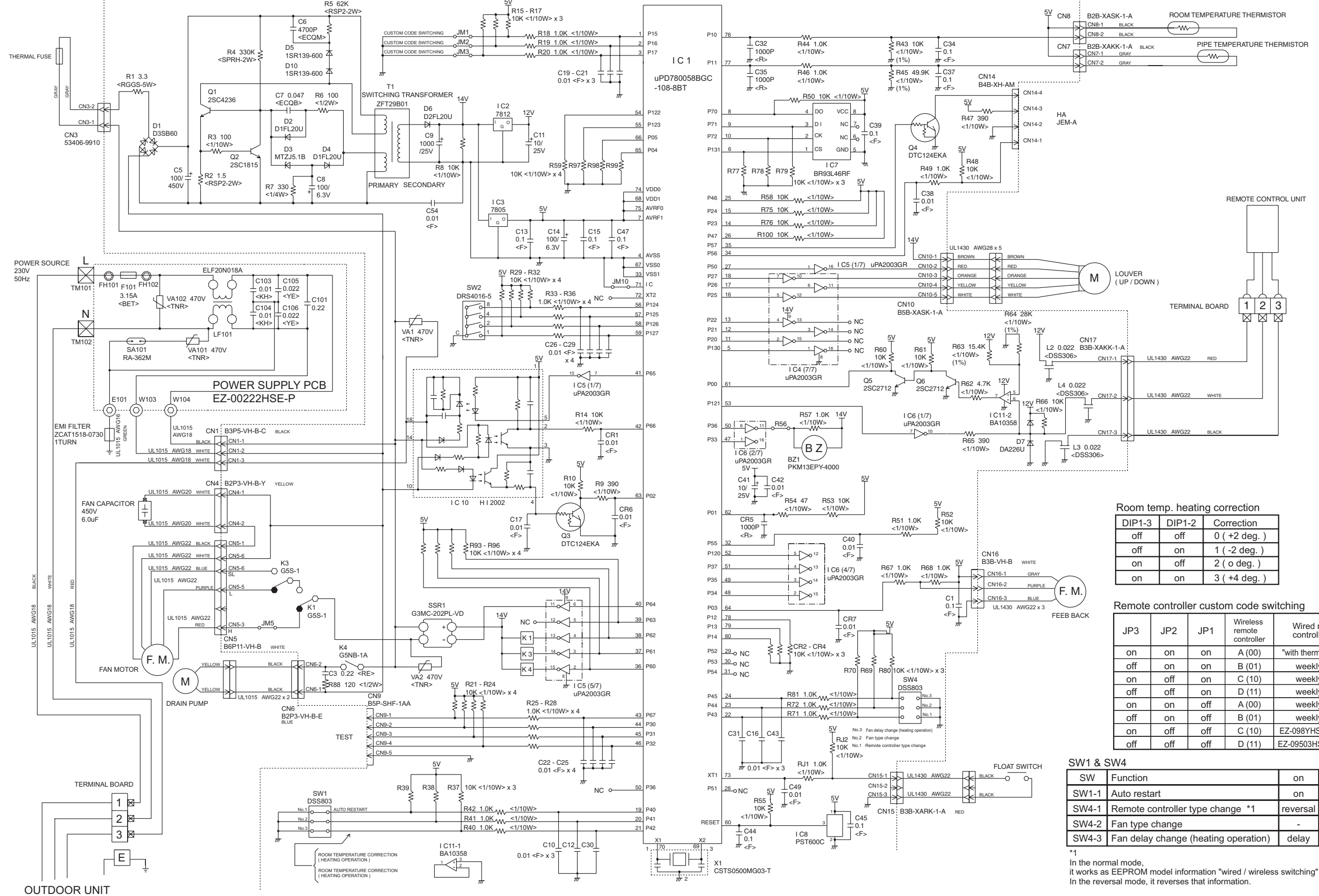
DIP1-3	DIP1-2	Correction
off	off	0 (+2 deg.)
off	on	1 (-2 deg.)
on	off	2 (0 deg.)
on	on	3 (+4 deg.)

SW1 & SW4

SW	Function	on	off
SW1-1	Auto restart	on	off
SW4-1	Remote controller type change *1	reversal	normal
SW4-2	Fan type change	-	-
SW4-3	Fan delay change (heating operation)	delay	no delay

*1 In the normal mode, it works as EEPROM model information "wired / wireless switching" shows. In the reversal mode, it reverses that information.

CONTROLLER PCB ASSEMBLY (MAIN PCB)
K01AL-040KHSE-C0



Room temp. heating correction

DIP1-3	DIP1-2	Correction
off	off	0 (+2 deg.)
off	on	1 (-2 deg.)
on	off	2 (o deg.)
on	on	3 (+4 deg.)

Remote controller custom code switching

JP3	JP2	JP1	Wireless remote controller	Wired remote controller
on	on	on	A (00)	"with thermistor" type
off	on	on	B (01)	weekly type
on	off	on	C (10)	weekly type
off	off	on	D (11)	weekly type
on	on	off	A (00)	weekly type
off	on	off	B (01)	weekly type
on	off	off	C (10)	EZ-098YHSE-R series
off	off	off	D (11)	EZ-09503HSE-R series

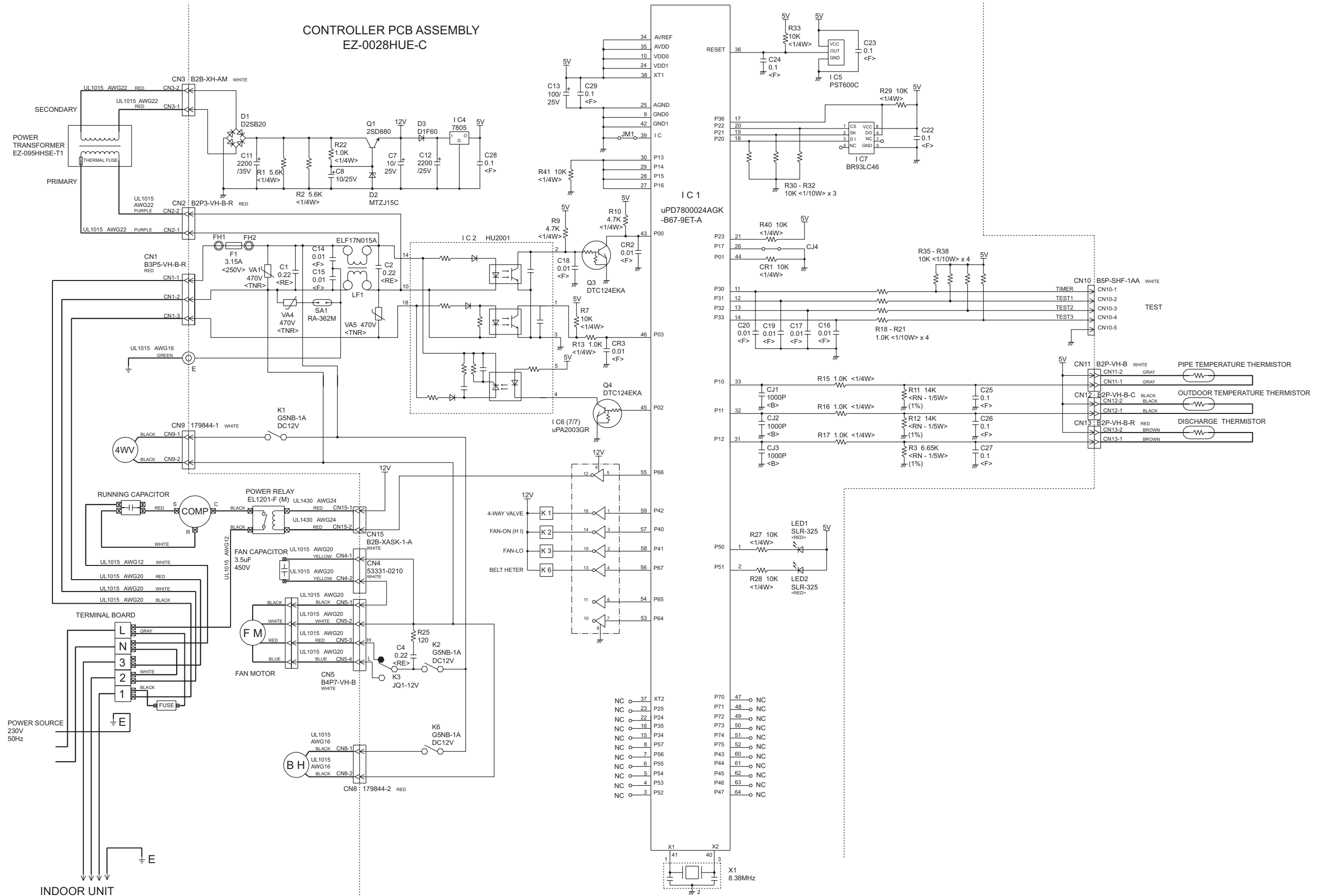
SW1 & SW4

SW	Function	on	off
SW1-1	Auto restart	on	off
SW4-1	Remote controller type change *1	reversal	normal
SW4-2	Fan type change	-	-
SW4-3	Fan delay change (heating operation)	delay	no delay

*1
In the normal mode, it works as EEPROM model information "wired / wireless switching" shows. In the reversal mode, it reverses that information.

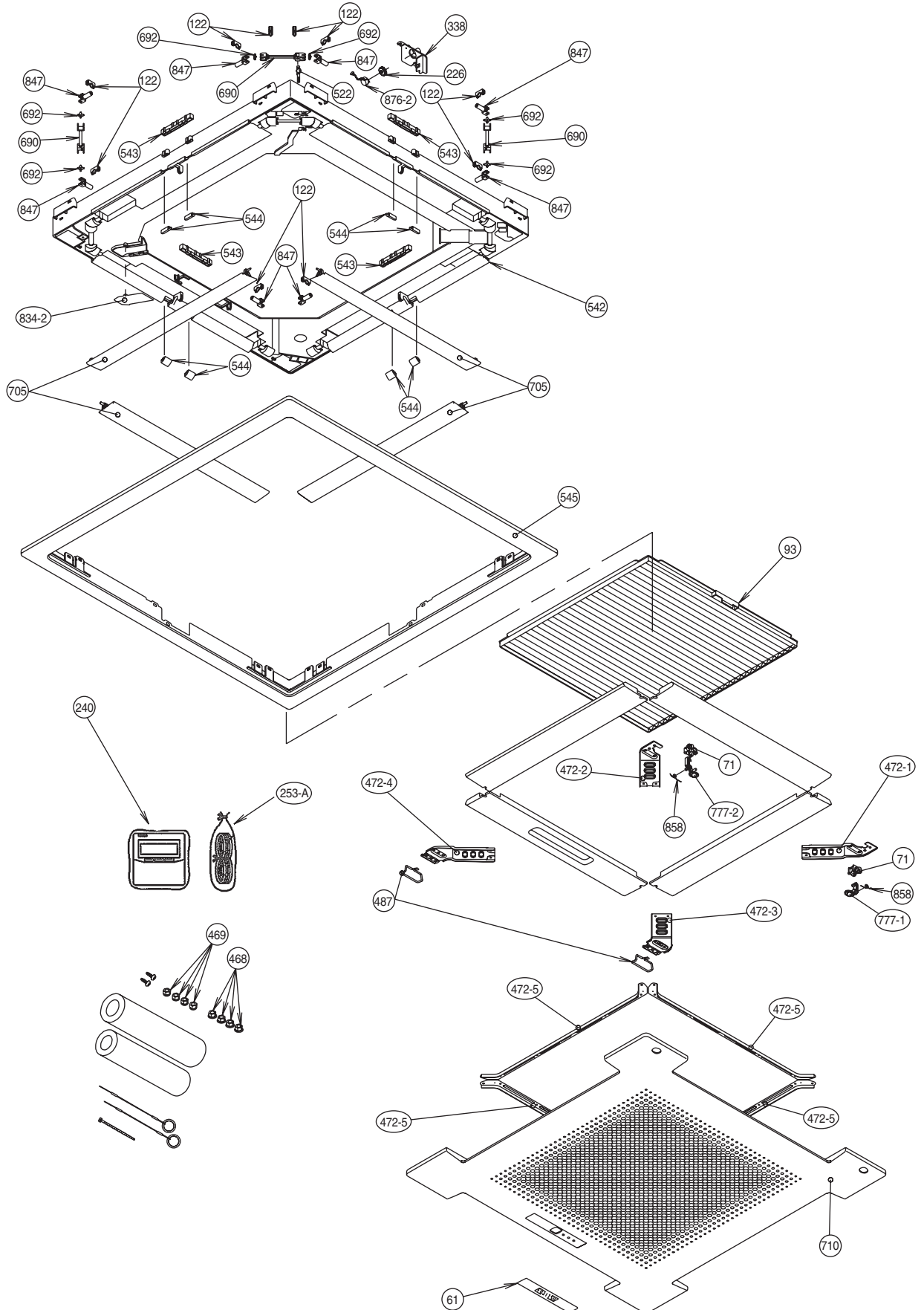
OUTDOOR PRINTED CIRCUIT BOARD CIRCUIT DIAGRAM

Model : AOG30UNBWL

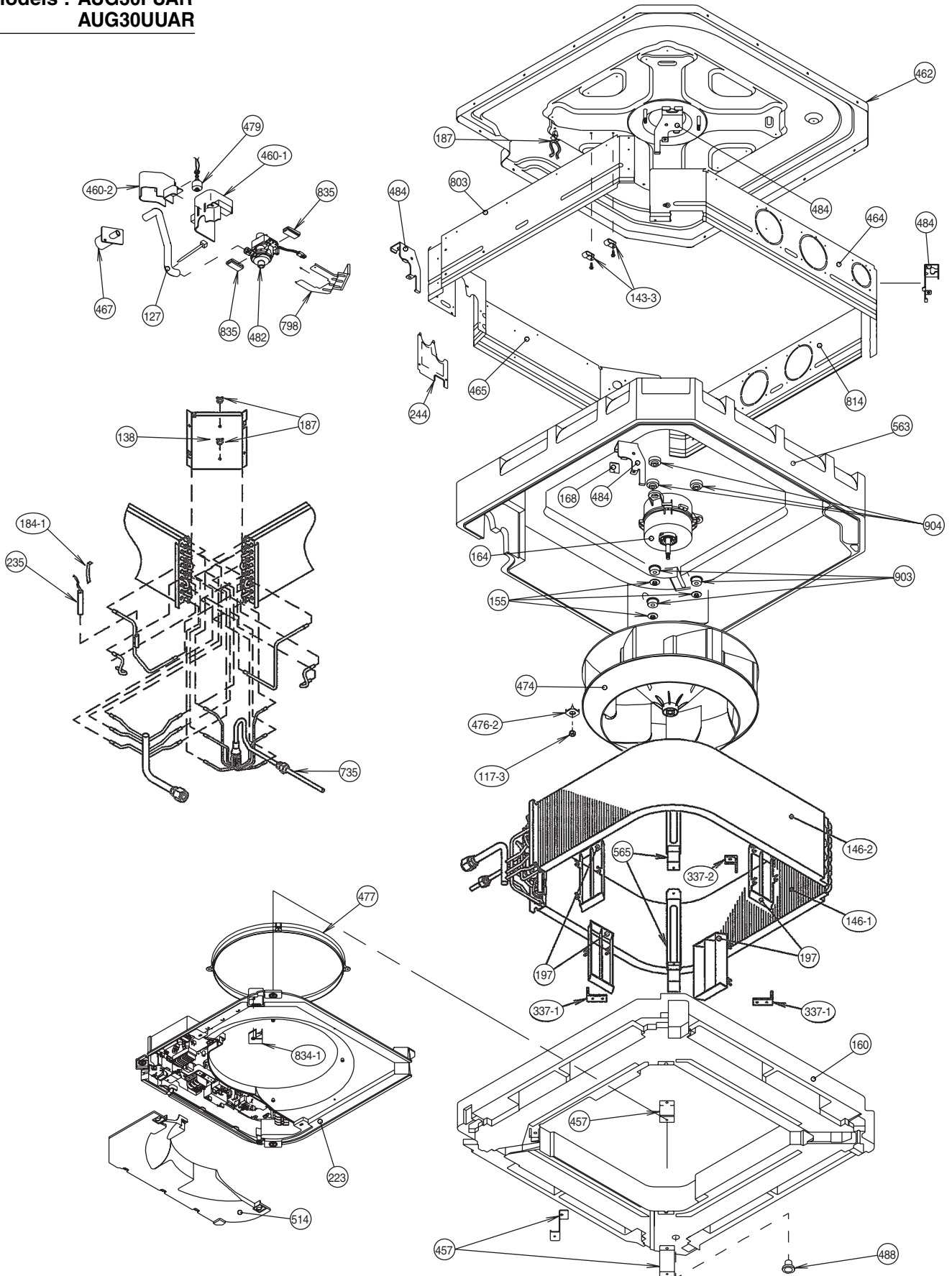


DISASSEMBLY ILLUSTRATION

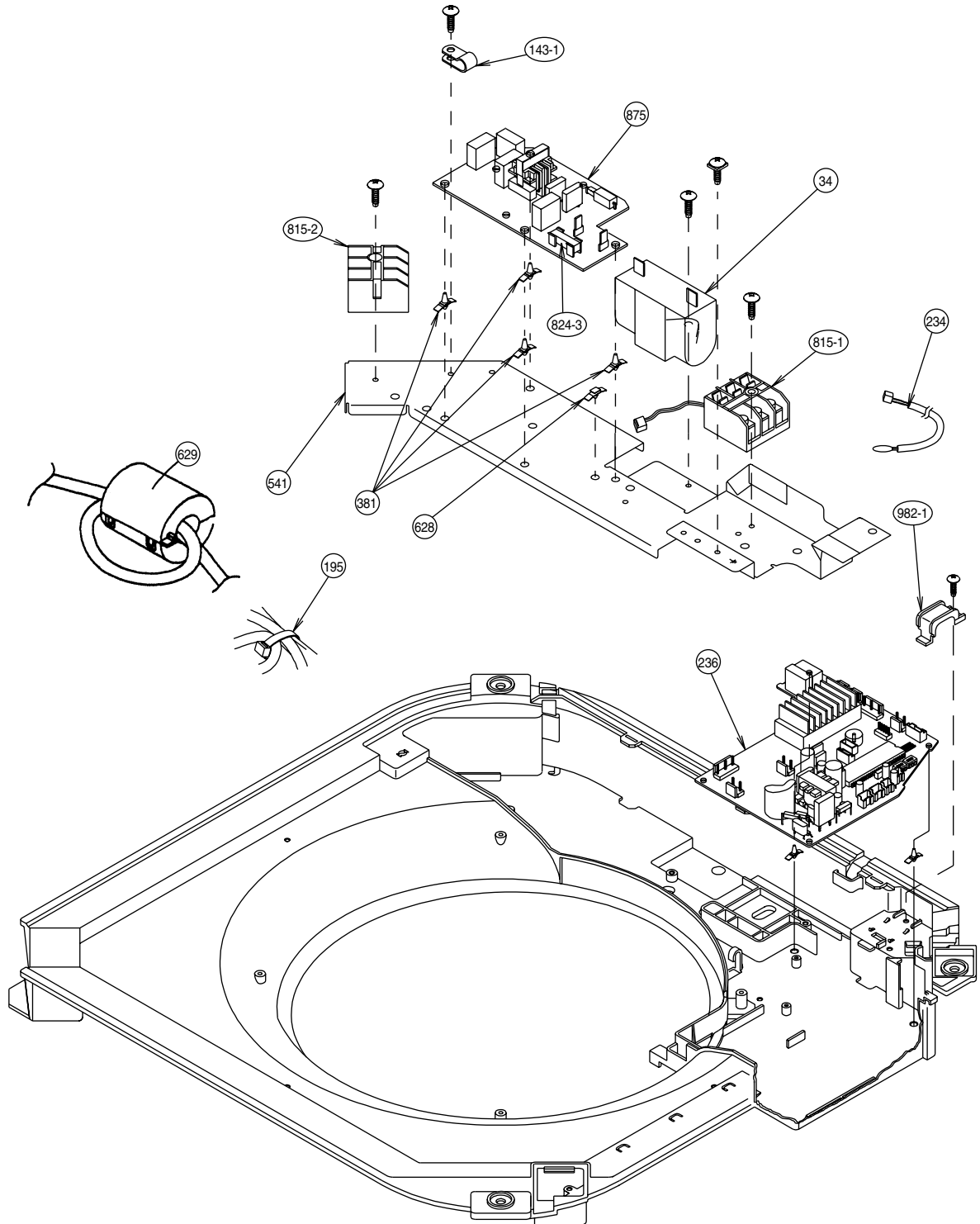
Models : AUG30FUAR
AUG30UUAR



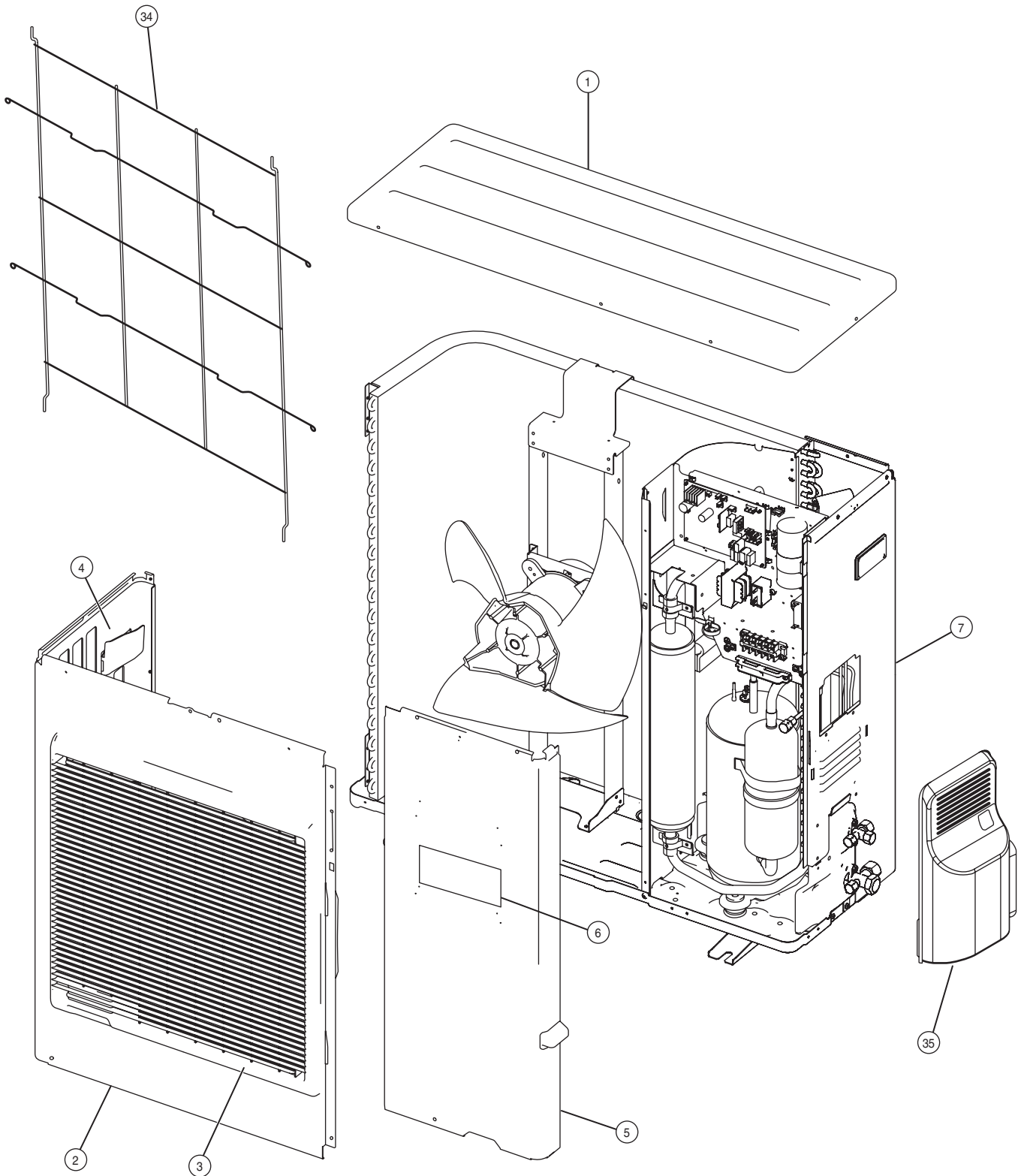
**Models : AUG30FUAR
AUG30UJAR**



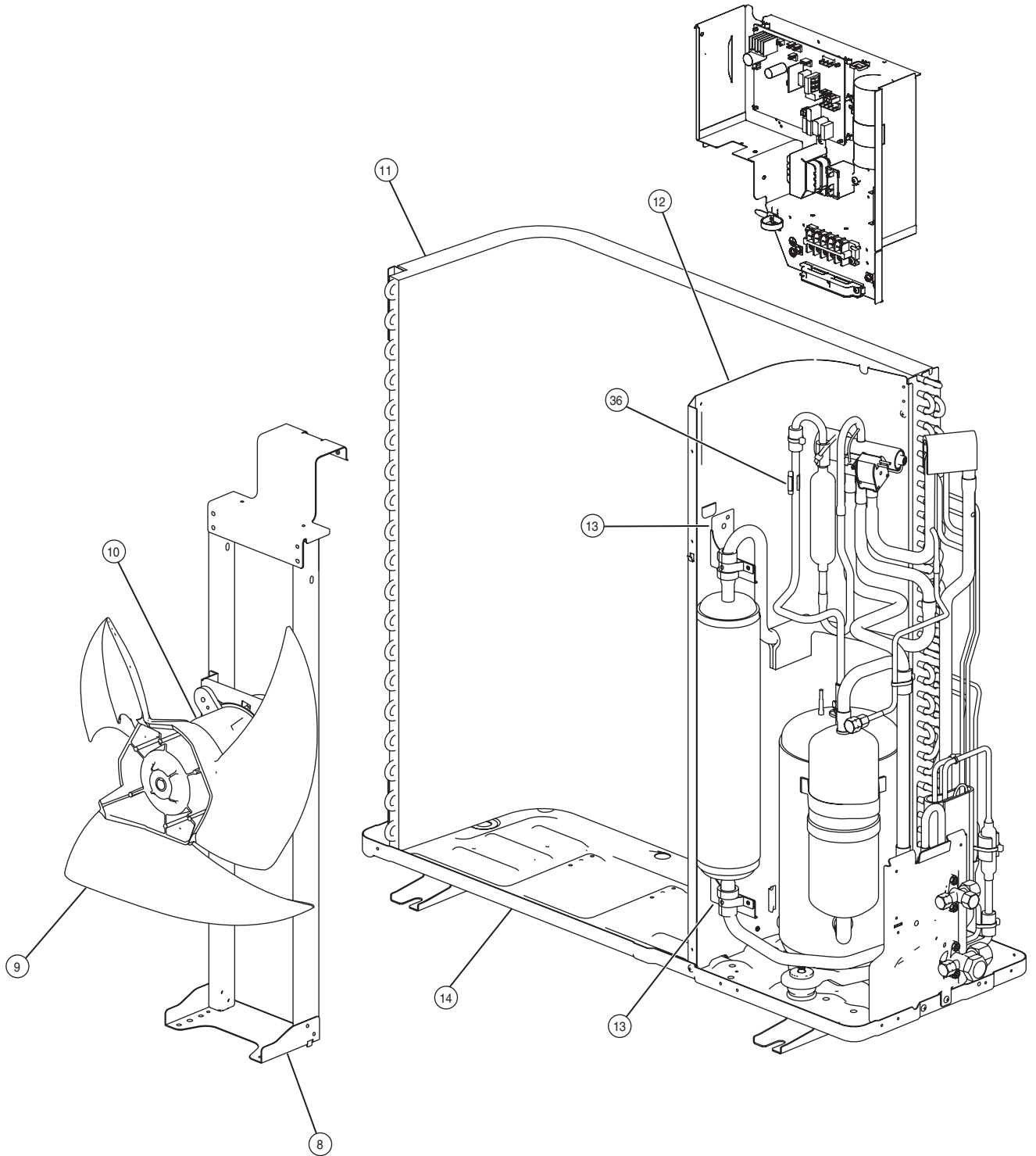
Models : AUG30FUAR
AUG30UUAR



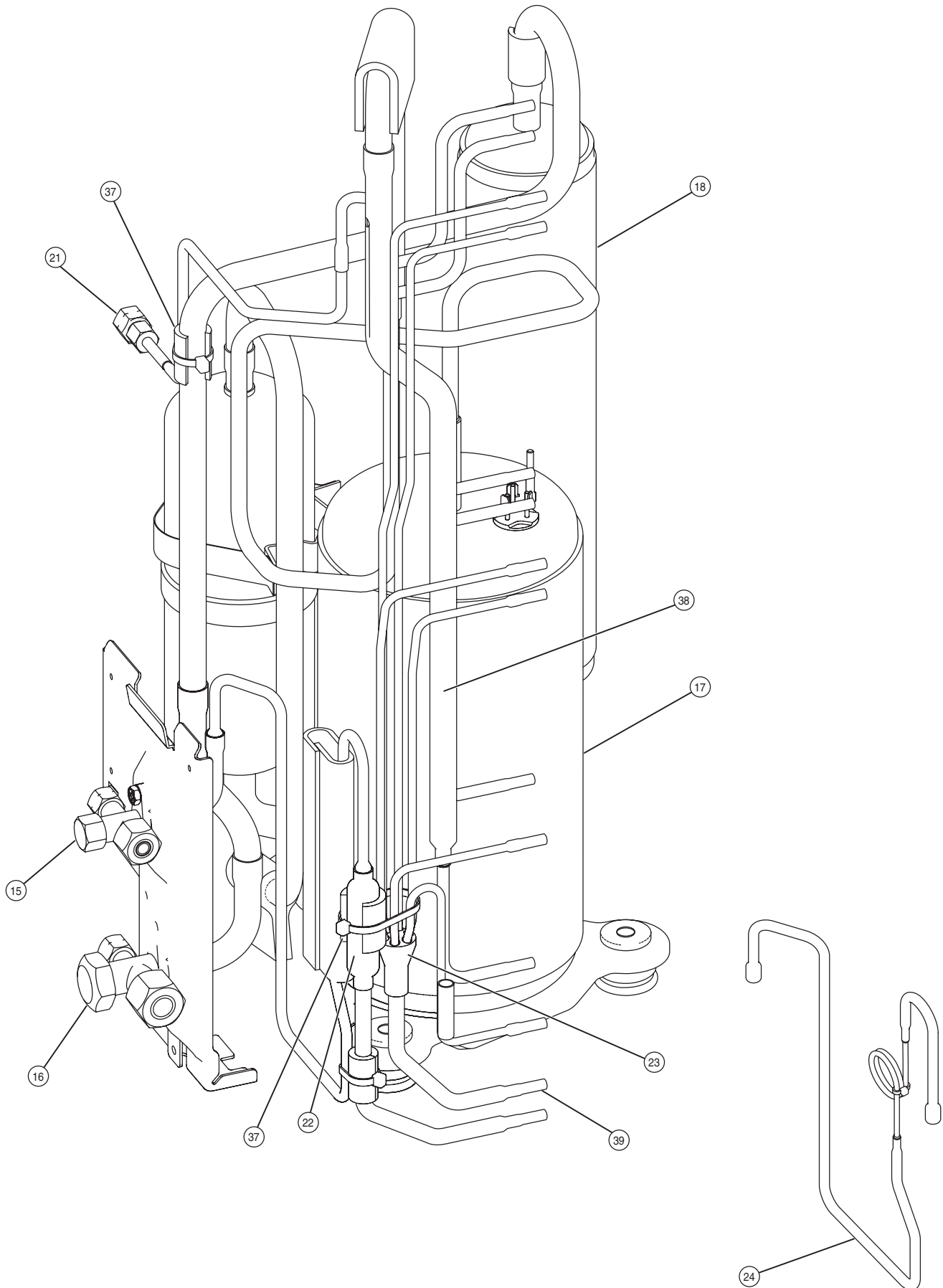
Models : AOG30FNBWL
AOG30UNBWL



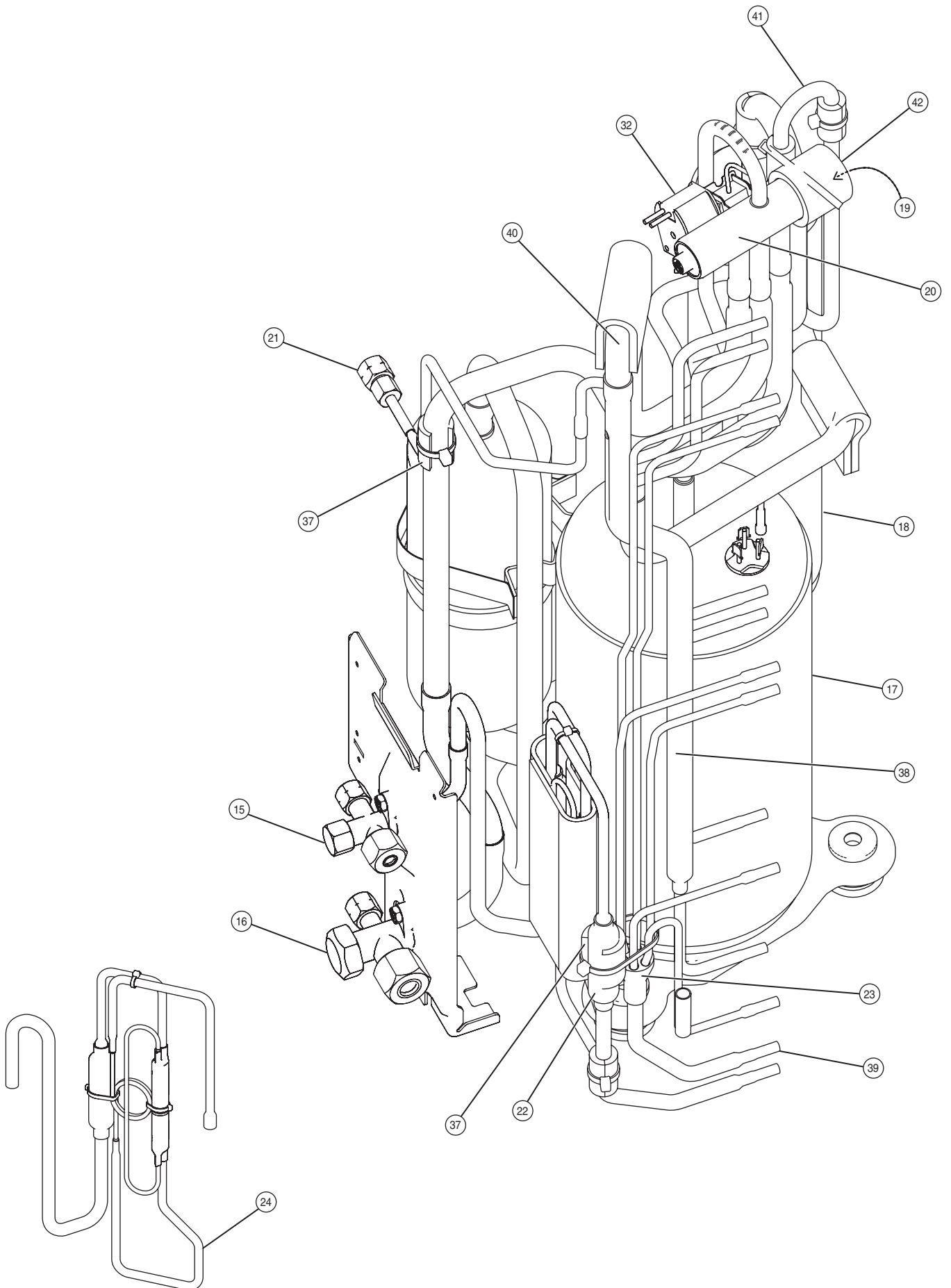
Models : AOG30FNBWL
AOG30UNBWL



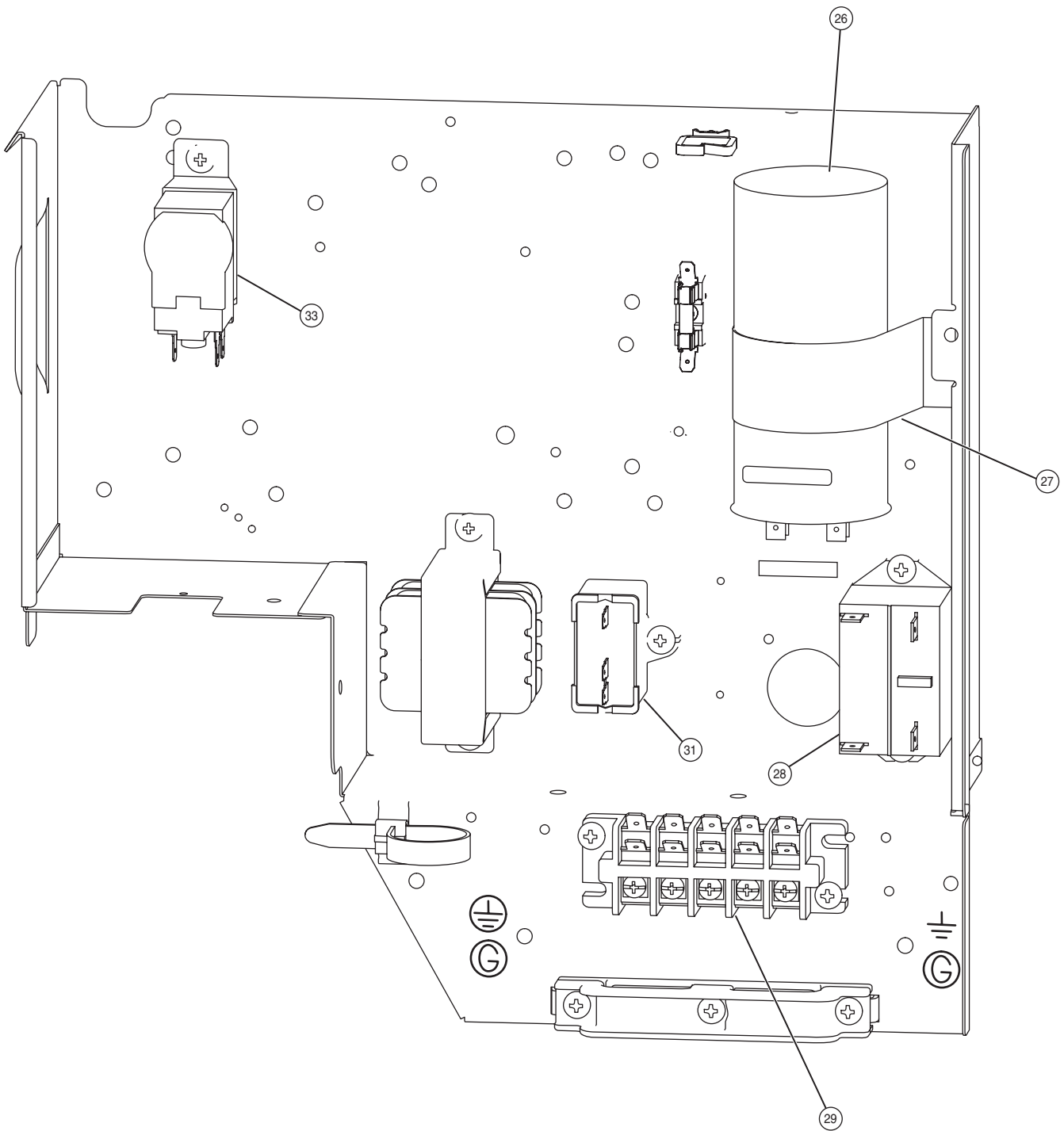
Model : AOG30FNBWL



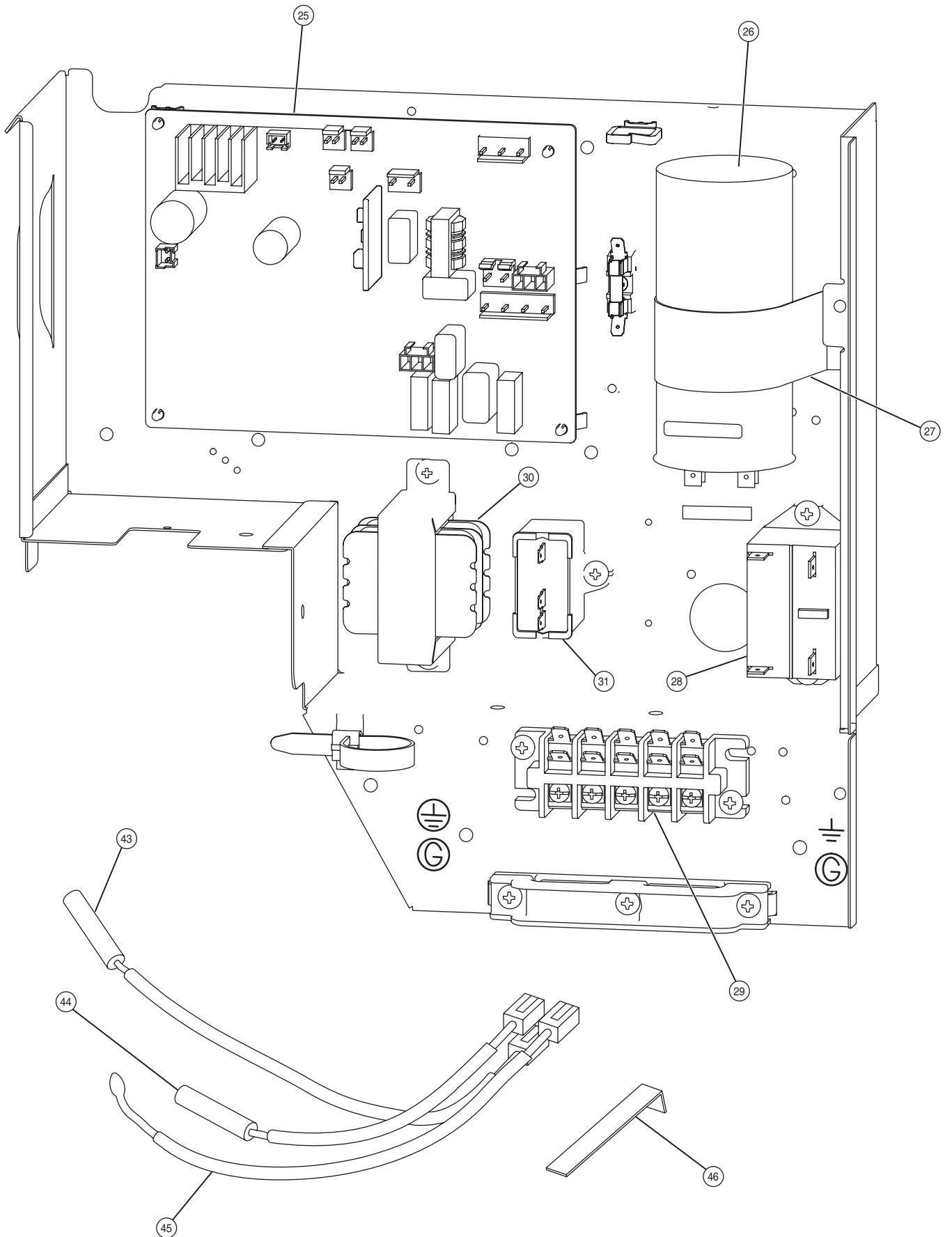
Model : AOG30UNBWL



Model : AOG30FNBWL



Model : AOG30UNBWL



PARTS LIST

When you order parts, please make a photocopy of this page and fill the number of the parts in the "Order" column.

INDOOR UNIT

Ref. No.	Description	Part No.		Ord. Q'ty	Ref. No.	Description	Part No.		Ord. Q'ty
		AUG30FUAR	AUG30UUAR				AUG30FUAR	AUG30UUAR	
34	Capacitor (Fan Motor)	9900270216	9900270216		472-4	Grille Reinforcement-D	9362741002	9362741002	
61	Decoration Plate	9363131000	9363131000		472-5	Grille Reinforcement-E	9362742009	9362742009	
71	Grille Hook Holder	9362782005	9362782005		474	Turbo Fan Assy	9362810012	9362810012	
93	Filter	9362766005	9362766005		476-2	Special Washer	9362756006	9362756006	
117-3	Hex. Nut w/Spring Washer	301721180114	301721180114		477	Bellmouth-B	9362774000	9362774000	
122	Louver Support Holder	9362799003	9362799003		479	Float Switch	9703285004	9703285004	
127	Drain Hose	9365074008	9365074008		482	Pump Unit	9703125010	9703125010	
138	Separate Wall	9362793001	9362793001		484	Hook	9362736008	9362736008	
143-1	Clamp NK-3N	313361274700	313361274700		487	Grille Hinge Wire	9362754002	9362754002	
143-3	Clamp NK-9N	313209399700	313209399700		488	Drain Pan Plug	313005174654	313005174654	
—	Evaporator Sub Assy	9362817271	9362817271		514	Control Box Cover	9362763004	9362763004	
146-1	Evaporator-A Assy	9373799030	9373799030		522	Joint Gear	9362772006	9362772006	
146-2	Evaporator-B Assy	9373800033	9373800033		541	Terminal Plate	9363642001	9363642001	
155	Special Nut M6	9307615016	9307615016		542	Panel Base	9362759014	9362759014	
160	Drain Pan Assy	9362804004	9362804004		543	Panel Frame Holder	9362761017	9362761017	
164	Motor, Induction	9601558019	9601558019		544	Panel Base Holder	9362760010	9362760010	
168	Cabinet-E	9362735001	9362735001		545	Panel Frame	9362758017	9362758017	
184-1	Thermistor Spring-A	313728262708	313728262708		563	Insulation (Inner Box)	9362797009	9362797009	
187	Clamp No.1219	313361271706	313361271706		565	Evaporator Holder Assy	9362802024	9362802024	
195	Clamp SKB-100	313361275805	313361275805		628	LOCKING Spacer-B	313005446558	313005446558	
197	Wind Guide Board	9373444015	9373444015		629	EMI Filter	0400247074	0400247074	
223	Control Box	9362762007	9362762007		690	Joint-A	9362773003	9362773003	
226	Motor Gear	9362764001	9362764001		692	Joint Shaft	9362771009	9362771009	
234	Room Temperature Thermistor	9703299025	9703299025		705	Louver	9362769013	9362769013	
235	Pipe Temperature Thermistor	9703297014	9703297014		710	Intake Grille	9362767019	9362767019	
236	Controller PCB Assy	9704557889	9704557872		735	Distributor Assy	9371325040	9371325040	
240	Remote Control Unit	9372266069	9372266052		777-1	Grille Hook-A	9362779012	9362779012	
244	Pipe Cover	9362748001	9362748001		777-2	Grille Hook-B	9362778015	9362778015	
253-A	Wire Assy (Remote)	9372714010	9372714010		798	Pump Hook Bracket	9362753005	9362753005	
337-1	Reinforcement (Eva.)-A	9362749008	9362749008		803	Cabinet-D	9362792004	9362792004	
337-2	Reinforcement (Eva.)-B	9362750004	9362750004		814	Cabinet-C	9362791007	9362791007	
338	Motor Holder	9362765008	9362765008		815-1	Terminal-3P	9306489069	9306489069	
381	Locking Spacer	313209391506	313209391506		815-2	Terminal-3P	9703345012	9703345012	
457	Reinforcement (Drain Pan)	9362757003	9362757003		824-3	Fuse	0600222512	0600222512	
460-1	Pump Cover-A	9362775007	9362775007		834-1	Wire Cover-A	9362789004	9362789004	
460-2	Pump Cover-B	9362776004	9362776004		834-2	Wire Cover-B	9362788007	9362788007	
462	Top Cover Plate Assy	9362806022	9362806022		835	Cushion Rubber (Pump)	9362777001	9362777001	
464	Cabinet-A Assy	9362807012	9362807012		847	Louver Supporter	9362770019	9362770019	
465	Cabinet-B Assy	9362808019	9362808019		858	Grille Spring	9362755009	9362755009	
467	Drain Port	9362786003	9362786003		875	Power Supply PCB Assy	9704561107	9704561107	
468	Special Nut-A (Large)	313005446653	313005446653		876-2	Motor, Step	9360307019	9360307019	
469	Special Nut-B (Small)	313005446759	313005446759		903	Rubber (Vibration-proof)-A	9364891002	9364891002	
472-1	Grille Reinforcement-A	9362738002	9362738002		904	Rubber (Vibration-proof)-B	9364892009	9364892009	
472-2	Grille Reinforcement-B	9362739009	9362739009		982-1	Cord Clamp	9356857009	9356857009	
472-3	Grille Reinforcement-C	9362740005	9362740005						

When you order parts, please make a photocopy of this page and fill the number of the parts in the "Order" column.


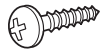


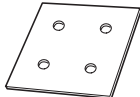
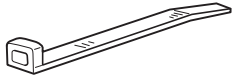



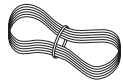
OUTDOOR UNIT

Ref. No.	Description	Part No.		Ord. Q'ty	Ref. No.	Description	Part No.		Ord. Q'ty
		AOG30FNBWL	AOG30UNBWL				AOG30FNBWL	AOG30UNBWL	
1	Top Panel Sub Assy	9374417018	9374417018		29	Terminal-5P	9900203023	9900203023	
2	Front Panel-M, Painted	9374094066	9374094066		30	Transformer	—	9900039011	
3	Fan Guard	9374330010	9374330010		31	Capacitor (Fan Motor)	9900270049	9900270049	
4	Side Grip	9374173013	9374173013		32	Solenoid	—	9900165055	
5	Service Panel Sub Assy	9374415038	9374415038		33	Thermostat Outdoor	9900275013	—	
6	Emblem-Rear	9372171011	9372171011		34	PRT Net-M	9374255030	9374255030	
7	Right Panel Sub Assy	9374416035	9374416035		35	Valve Cover	9374174010	9374174010	
8	Motor Bracket Sub Assy	9374418039	9374418039		36	Thermostat Holder	—	9357804002	
9	Propeller Fan Assy	9366378013	9366378013		37	Capillary Holder Rubber	313394274808	313394274808	
10	Motor, Induction	9601671060	9601671060		38	Inlet Pipe (Condenser)-A Assy	9373461067	9373461067	
—	Condenser-A Sub Assy	9374420056	9374420049		39	Outlet Pipe (Condenser)-A Assy	9374266050	9374266050	
11	Condenser-A Assy	9374433063	9374433056		40	Inlet Pipe (Condenser)-C Assy	—	9374469017	
12	Separate Wall Sub Assy	9374413034	9374413034		41	Discharge-B Assy	—	9372246054	
13	Accumulator Support-B	9355350006	9355350006		42	4-Way Valve Rubber	—	313728251908	
14	Base Assy	9374166046	9374166046		43	Heat Exchanger Temp. Thermistor	—	9900043049	
15	3-Way Valve Assy	9372205044	9372205044		44	Discharge Pipe Temp. Thermistor	—	9900038038	
16	3-Way Valve Assy	9372205075	9372205075		45	Outdoor Temp. Thermistor	—	9900037048	
17	Compressor Assy	9372558089	9372558089		46	Thermistor Spring-A	—	313728262708	
18	Accumulator	9374338016	9374338016		—	Special Nut M5 (For Compressor)	9300301015	9300301015	
19	Muffler	—	9372369012		—	Discharge-A Assy	9372264089	—	
20	4-Way Valve	—	9900163013		—	Inlet Pipe (Condenser)-C Assy	—	9374469017	
21	Check Valve Assy	9374274024	9374274024		—	Cover Gasket (For Compressor)	9371512013	9371512013	
22	Strainer Assy	9372524015	9372524015		—	Terminal Cover (For Compressor)	9371511016	9371511016	
23	Distributor	9369128004	9369128004		—	Rubber Seat (For Compressor)	9351049010	9351049010	
24	Capillary Assy	9372197349	9372197325		—	Compressor Cover	9374430031	9374430031	
25	Controller PCB Assy	—	9704299024		—	Belt Heater	—	9361140257	
26	Capacitor, Plastic	9900269081	9900269081		—	Varistor	—	0000361224	
27	Capacitor Clamp	9351770013	9351770013		—	Arrester	—	0600280154	
28	Relay	9900074012	9900074029		—	Relay	—	9900200015	

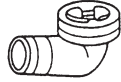

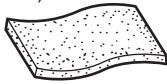
STANDARD ACCESSORIES

The following installation parts are furnished.
Use them as required.

INDOOR UNIT ACCESSORIES

Name and Shape	Q'ty	Application
Coupler heat insulation 	2	For indoor side pipe joint 9350716029 } 1 each 9352766015 }
Screw 	2	For installing the remote controller 0700181108
Special nut A (large flange) 	4	For installing indoor unit 313005446653
Special nut B (small flange) 	4	For installing indoor unit 313005446759
Template 	1	For ceiling hole cutting 9363173000
Binder 	1	For remote controller and remote controller cord binding 313361275805 (Small)
Blower cover insulation 	2	For discharged air 9363265002
Hook wire 	2	For installing intake grille 9363168006
Remote controller 	1	(Cooling model) 9372266069 (Cooling & Heating model) 9372266052
Remote controller cord 	1	For connecting the remote controller 9372714010

OUTDOOR UNIT ACCESSORIES

Name and Shape	Q'ty	Application
Drain pipe 	1	For outdoor unit drain piping work (May not be supplied, depending on the model.)
Drain cap 	2	
Insulation (seal) 	1	For filling in a gap at the entrance of connection cords

OPTIONS

The following options are available.

ADDITIONAL GRILLE ASSY : UTG-AGEA-W (P/N 9002230002)

Simple remote controller : UTB-GPB (P/N 9077657001)

